
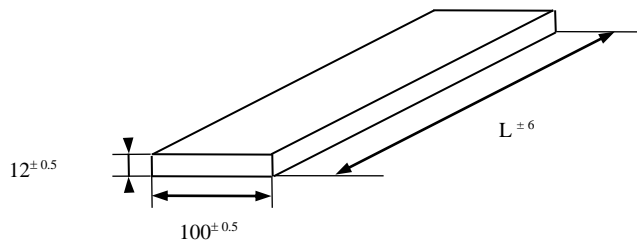


Updated : 16/12/2016	Technical Data Sheet	
Ref. : Alloys	<u>PHYSICAL CHARACTERISTICS</u> <u>ANODES</u>	
Created : 20/11/2016		



1.1. CAST FLAT ANODES :




Most standard alloy: Sn100. Other on request (possibility of lead alloy)

Length $L = 300$ min up to 1200 mm (by step of 50 mm).

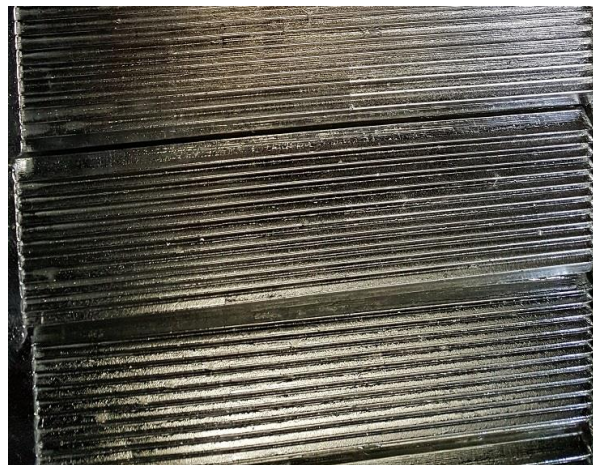
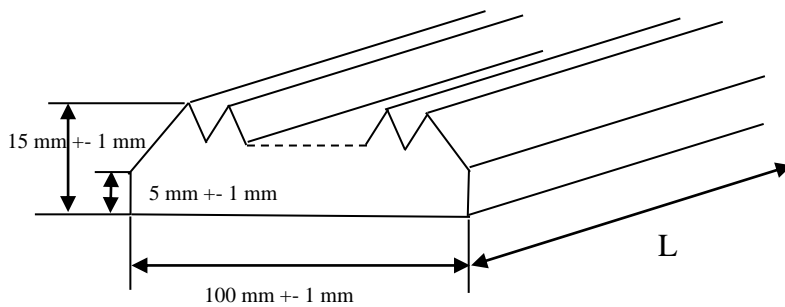
Thickness $T = 12$ mm.

Possibility of adding a hole to the end of the anode for its attachment. (Diameter of the hole and distance to the edge to be defined with the customer).

Packaging on wooden pallet.

Updated : 16/12/2016	Technical Data Sheet	
Ref. : Alloys	<u>PHYSICAL CHARACTERISTICS</u> <u>ANODES</u>	
Created : 20/11/2016		

1.2. CAST ANODES with GROOVES :




Tooth of 8 mm width. 11 peaks along the 100 mm width.

Most common alloy: Sn100. Other on request (possibility of lead alloy)

Length $L = 300$ mini up to 1000 mm (by step of 50 mm).

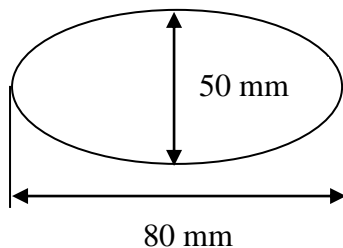
Possibility of adding a hole to the end of the anode for its attachment. (Diameter of the hole and distance to the edge to be defined with the customer).

Packaging on wooden pallet.

Updated : 16/12/2016	Technical Data Sheet	
Ref. : Alloys	<u>PHYSICAL CHARACTERISTICS</u> <u>ANODES</u>	
Created : 20/11/2016		

1.3. ELLIPTIC CASTING ANODES (With GROOVES) :

Section with the following dimensions :



Most standard alloy: Sn100. Other on request (possibility of lead alloy)

Length L = 400 mini to 1000 mm (by step of 100 mm). Other on request
Standard threaded hole in M10 for hooking.

Packaging on wooden pallet.

We cannot anticipate any and all conditions and situations under which the information and our products or the combination of both with others will be used. We do not assume any liability in the safety and suitability of our products alone or in combination with others. Users must make their own tests to determine the safety and suitability of each product used alone or with other products for their own use. Except any previous written agreement, our products are sold without guarantee and customers must assume all liability for any loss or damage suffered by themselves or by third parties, either from handling or use of our products alone or with others. In case of any difference or variation seen during the use of the products we request that you contact our technical department.