

Update : 17/07/2015

TECHNICAL DATA SHEET

Ref. : Other

Tin dome

Created on : 15/01/2013

Alloy : Sn 100



MBO, solder specialist, manufactures a wide range of products including the **domed tin anode**.

To meet the new needs of its customers, MBO has developed the **tin anodes dome** specifically designed for the modern baths.

All **domed tin anodes** are exclusively manufactured from high purity metals.

Alloy : **Sn 100**

1 - GENERAL CHARACTERISTICS (Alloy):

Pure tin for soldering produced from very high quality metal.

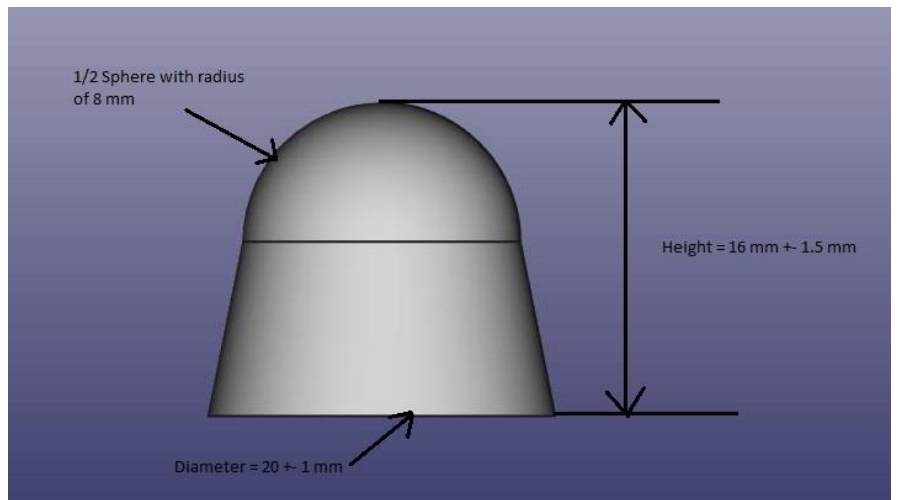
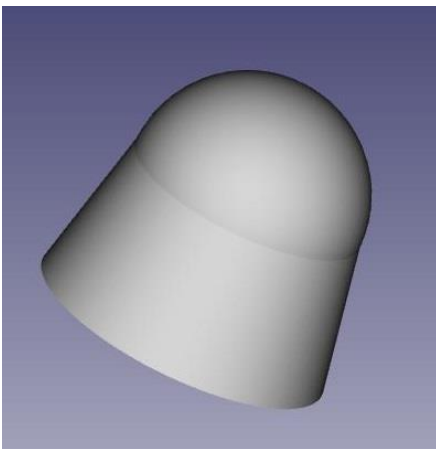
This alloy is compliant with the **2011/65/EU directive** concerning the removal of lead in soldering alloys.


2 - CHEMICAL CHARACTERISTICS (Alloy):

- 2.1. Amount of Tin : 100%
- 2.2. Tin from first melting : global purity > 99.90%

3 - PHYSICAL CHARACTERISTICS :

- 3.1. Melting point : 232°C
- 3.2. Specific weight : 7,3
- 3.3. Shape : Dome with the following dimensions
- 3.4. Dome weight : 22g +-1.2 g



Update : 17/07/2015	TECHNICAL DATA SHEET	
Ref. : Other	Tin dome	
Created on : 15/01/2013	Alloy : Sn 100	



4 - USAGE :

4.1. Working temperature : from 270°C to 300°C

5 - OTHERS CHARACTERISTICS :

5.1. Packaging : Bucket of 20 Kg

5.2. Storage : In original packaging at room temperature away from inclemencies for 12 months.

We cannot anticipate any and all conditions and situations under which the information and our products or the combination of both with others will be used. We do not assume any liability in the safety and suitability of our products alone or in combination with others. Users must make their own tests to determine the safety and suitability of each product used alone or with other products for their own use. Except any previous written agreement, our products are sold without guarantee and customers must assume all liability for any loss or damage suffered by themselves or by third parties, either from handling or use of our products alone or with others. In case of any difference or variation seen during the use of the products we request that you contact our technical department.